

## R-353



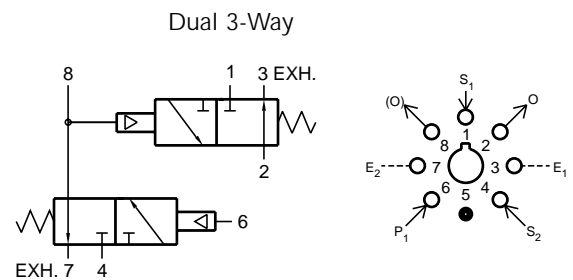
### Dual 3-Way Valve

#### Features:

- Micro gap construction - snap action and no blow by
- Complete function in one module
- Auxiliary outputs save fittings and time

#### Performance:

Flow (SCFM @ 100 psig).....	9
Pilot pressure (psig) minimum.....	40
Temperature.....	32° to 180° F
Working pressure.....	0 to 150



#### Description:

R-353 is a dual element combination consisting of 2 normally-CLOSED, spring return, 3-way valves interconnected to form a 3-input "AND" subcircuit. Ports 3 and 7 are exhausted to atmosphere, and should not be restricted. Ports 1, 4, and 6 are inputs. Port 2 is output. Port 8 is an auxiliary output and should be plugged if not used.

## R-355



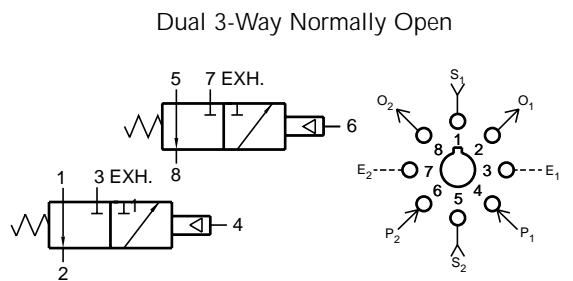
### Dual Normally Open 3-Way Valve

#### Features:

- Micro gap construction - snap action and no blow by
- Two independent units in one module
- Saves space

#### Performance:

Flow (SCFM @ 100 psig).....	9
Pilot pressure (psig) minimum.....	40
Temperature.....	32° to 180° F
Working pressure.....	0 to 150



#### Description:

R-355 is a dual element combination of 2 independent, spring-return, 3-way valves in a single manifold, set-up for normally-OPEN usage only. Ports 3 and 7 are exhausts to atmosphere and can not be restricted.